

Child Welfare and Prevention in Nebraska

Investing in Prevention and Supporting Families



NEBRASKA

Good Life. Great Mission.

DEPT. OF HEALTH AND HUMAN SERVICES

Helping People Live Better Lives.

Overview



Child Welfare Prevention in Nebraska



Family First Prevention Services Act



Future of Child Welfare Prevention in Nebraska

NEBRASKA

Good Life. Great Mission.

DEPT. OF HEALTH AND HUMAN SERVICES

Helping People Live Better Lives.

Child Welfare Prevention in Nebraska

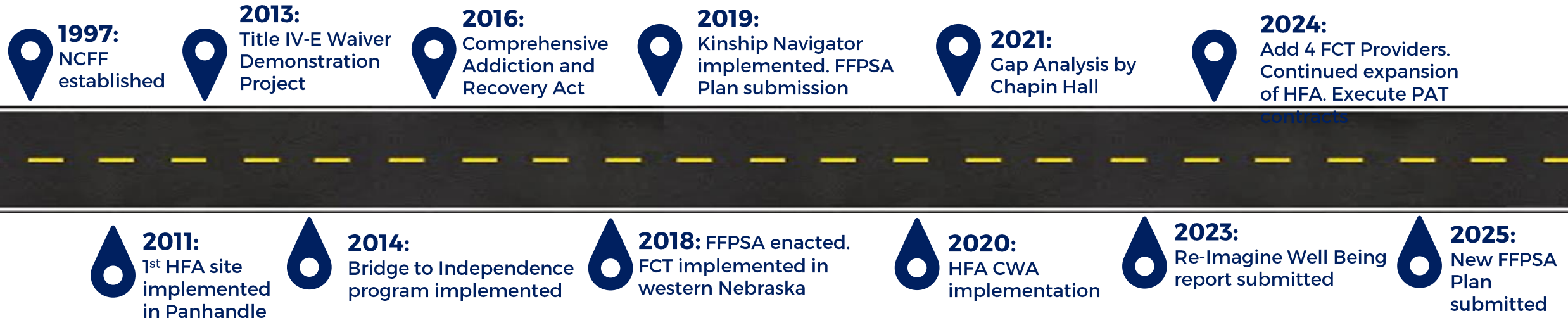
NEBRASKA

Good Life. Great Mission.

DEPT. OF HEALTH AND HUMAN SERVICES

Helping People Live Better Lives.

History of Child Welfare Prevention in Nebraska



Community Collaborative Grants

Bring Up Nebraska is a statewide prevention partnership that supports **local community collaboratives**

- All Bring Up Nebraska collaboratives have a community response (CR) program of formal and informal supports (e.g., churches, public health, child care, schools) committed to keeping families safely together in their homes and out of public systems
 - CR relies on family engagement and practices such as **navigation, coaching & flexible funding to meet concrete needs**
- Since 2007, Nebraska has seen a **50% reduction in substantiated maltreatment rates**, attributed in part to prevention supports, increased protective factors & authentically involving communities



(Source: [CB Express](#), 2020)



Helping People Live Better Lives.

Continuum of Child Welfare Prevention in Nebraska

CFS Prevention Continuum Categories and Examples

Current Nebraska examples

Primary Prevention

- *Home Visitation programs
- *Child Care/Early Childhood
- *TANF/EA/MLTC
- *Teen and young parent's programming
- *Maternal/Child Health programming
- *EDN/Early Childhood
- *Housing
- *Fatherhood initiatives
- *Full Service Community Schools
- *Financial Literacy

Need specific Community-Based

- *BUN Community Collaboratives
- *Central Navigation/Coaching
- *Prenatal Plans of Safe Care
- *Family Helpline/211
- *Professional Partner Program
- *Beyond School Bells
- *Child Abuse Prevention Fund Board projects
- *Family Resource Centers
- *Community Action Partnerships
- *Concrete/Flexible Funding
- *NonSystem Kinship Navigator
- *CarePortal
- *Help Me Grow portal
- *Mommy and Me SUD programming
- *Legal support contract
- *Community Based targeted Services

Families with CPS system initial contact

- *Hotline Screen Out Referrals
- *Alternative Response
- *Anti-trafficking response
- *Family Finding
- *FFPSA service array
- *Plans of Safe Care
- *Pre-petition legal support
- *Older Youth and Transitional Services
- *In-Home service array
- *MCO coordination
- *Child Advocacy Centers

Post CPS case closure

- *Reunification service array
- *Community based referrals
- *Post Guardianship/Adoption supports
- *Connection Youth Initiative
- *Bridge to Independence
- *Home Visitation

Vision: Families have what they need when they need it to remain safe, together, and thriving in their community.

NEBRASKA

Good Life. Great Mission.

DEPT. OF HEALTH AND HUMAN SERVICES

Family First Prevention Services Act

NEBRASKA

Good Life. Great Mission.

DEPT. OF HEALTH AND HUMAN SERVICES

Helping People Live Better Lives.

What is FFPSA and Why is it Valuable?

Federal legislation that promotes innovation and flexibility via prevention services reimbursement

FFPSA funds support early prevention and evidence-based practices that help keep families together

FFPSA provides case managers with a broader array of support and funding opportunities

NEBRASKA

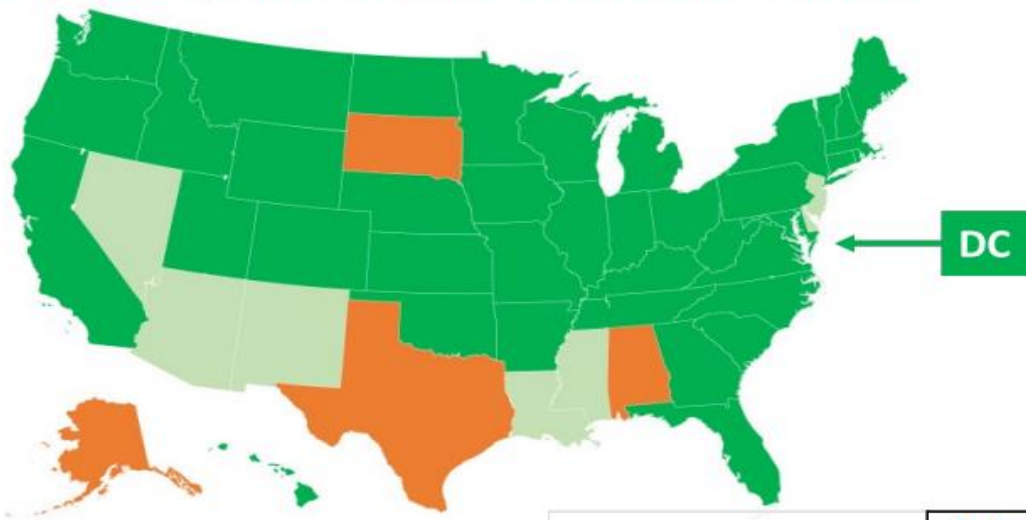
Good Life. Great Mission.

DEPT. OF HEALTH AND HUMAN SERVICES

Helping People Live Better Lives.

FFPSA Across the Nation

Status of Family First Prevention Plans From Listing on Children’s Bureau Site



- Since creation of this map, South Dakota and New Mexico have submitted their Plans
- Arizona, Rhode Island, Louisiana, Puerto Rico and Nevada’s Plans have been approved
- 11 States, Tribes and territories have not submitted a Plan

Tribes and Territories Submitted or Approved		States & DC	Tribes & Territories	Total
EASTERN BAND OF CHEROKEE INDIANS	Approved	40	4	44
CHEROKEE NATION, TALHLEQUAH, OK	Submitted - Not Approved	7	1	8
SALT RIVER PIMA MARICOPA INDIAN COMMUNITY	Not Yet Submitted	4	8	12
PORT GAMBLE S'KLALLAM TRIBE	Total	51	13	64
PUERTO RICO				

Compiled by Don Winstead Consulting from ACF/CB web site
August 21, 2023

FFPSA in Nebraska

- Submitted our Plan in 2019
- Defined a 3-tier definition of prevention in Nebraska
- Focus has been on providing EBPs to families that are involved in the child welfare system.
- Expanded capacity/service availability in child welfare for three EBPs
- Moved away from clinical models as part of our FFPSA planning

NEBRASKA

Good Life. Great Mission.

DEPT. OF HEALTH AND HUMAN SERVICES

Helping People Live Better Lives.

Kinship Navigator Program

Evidence based program provided across Nebraska to non system involved kinship placements

Two providers: Lutheran Family Services and Nebraska Children's Home Society

Program that preserves families providing kinship care to help meet the needs of the children that reside with them (not through child welfare)

NEBRASKA

Good Life. Great Mission.

DEPT. OF HEALTH AND HUMAN SERVICES

Helping People Live Better Lives.

Nebraska's Current Eligibility and Candidacy Definition

A child who is at risk of entering foster care BUT can remain safely in his/her home or an Approved Informal Living Arrangement as long as Prevention Services are in place to prevent foster care placement

A child who is living in a family home accepted for investigation, with an active, ongoing case, including Court, Non-Court, and AR involved youth

A child with a 3(c) case filed in Juvenile Court ("mentally ill and dangerous")

A pre-natal infant and/or other children of an otherwise eligible pregnant/parenting foster youth in foster care/IL/B2I

A child whose adoption or guardianship is at risk of disruption or dissolution that would result in foster care placement.

A child who was previously in out-of-home care but has been reunified with his/her parent/caregiver.

A child with extraordinary needs and whose parents/caretakers are unable to secure assistance for them.

Youth involved with Juvenile Probation and living in the parental/caretaker home.

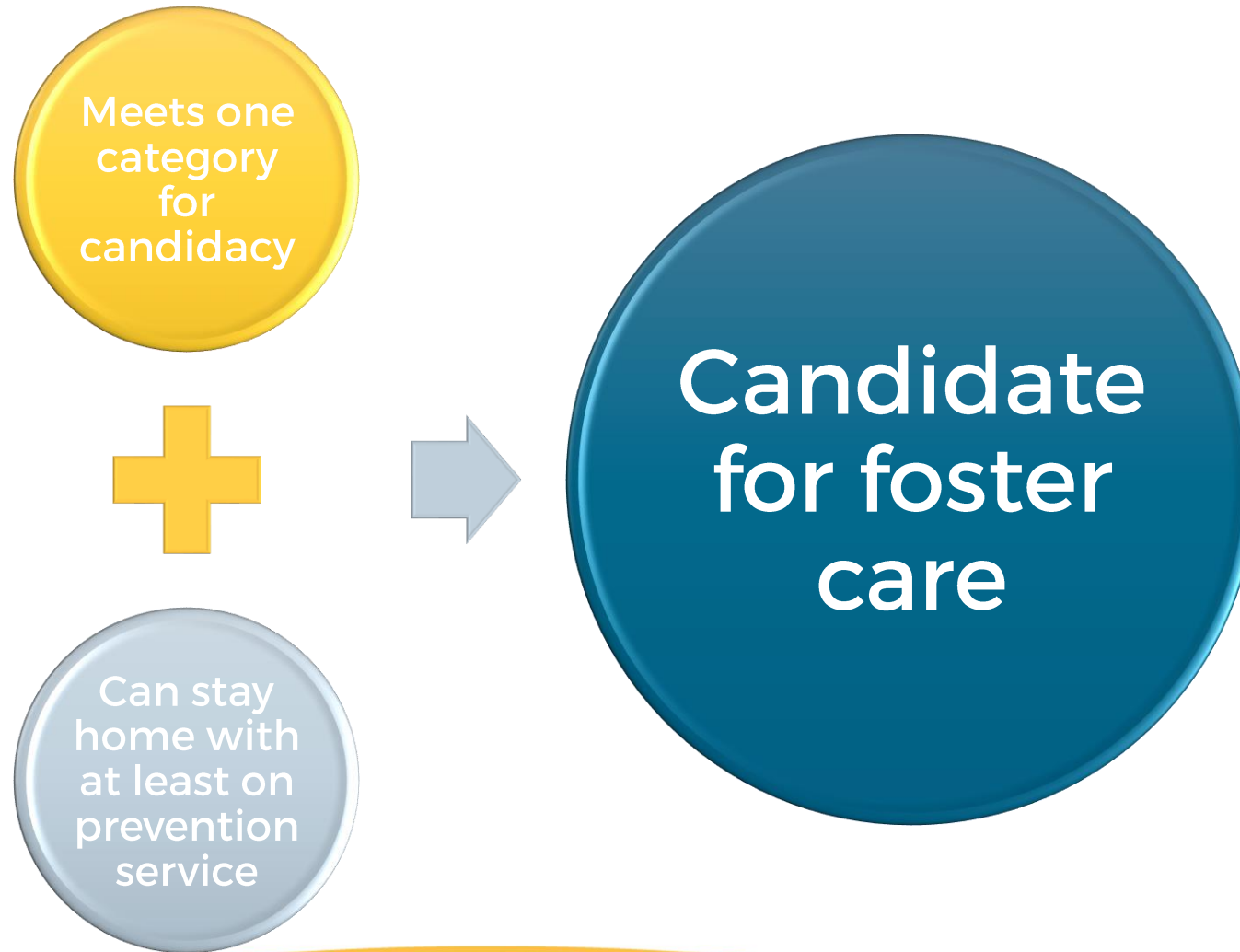
NEBRASKA

Good Life. Great Mission.

DEPT. OF HEALTH AND HUMAN SERVICES

Helping People Live Better Lives.

Determining Eligibility and Candidacy



NEBRASKA

Good Life. Great Mission.

DEPT. OF HEALTH AND HUMAN SERVICES

Helping People Live Better Lives.

Evidenced Based Prevention Programs

EBPs in Nebraska

NEBRASKA

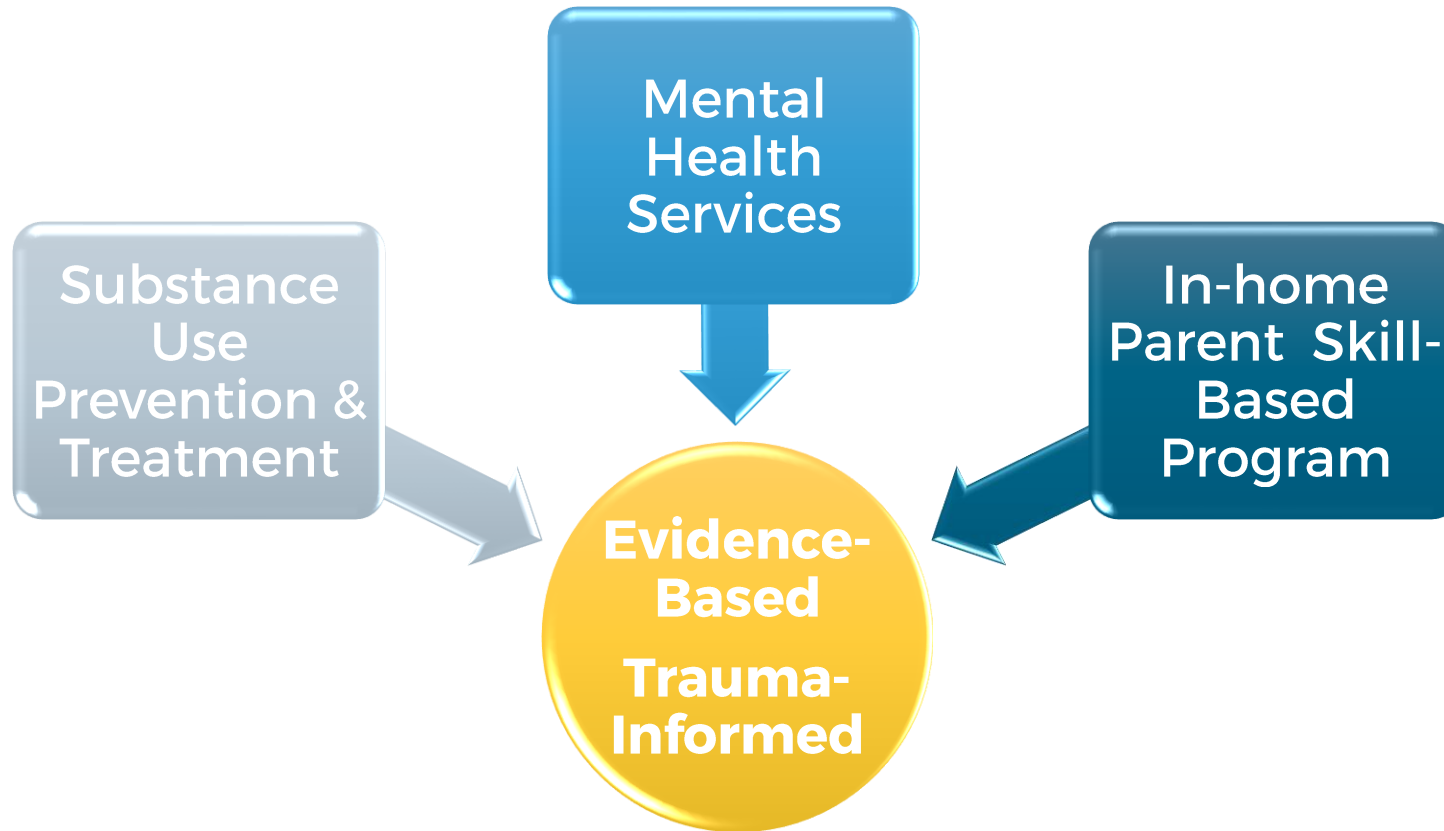
Good Life. Great Mission.

DEPT. OF HEALTH AND HUMAN SERVICES

Helping People Live Better Lives.

Evidenced Based Prevention Programs

Allows federal funds to cover the cost of prevention programs to prevent children from entering foster care.



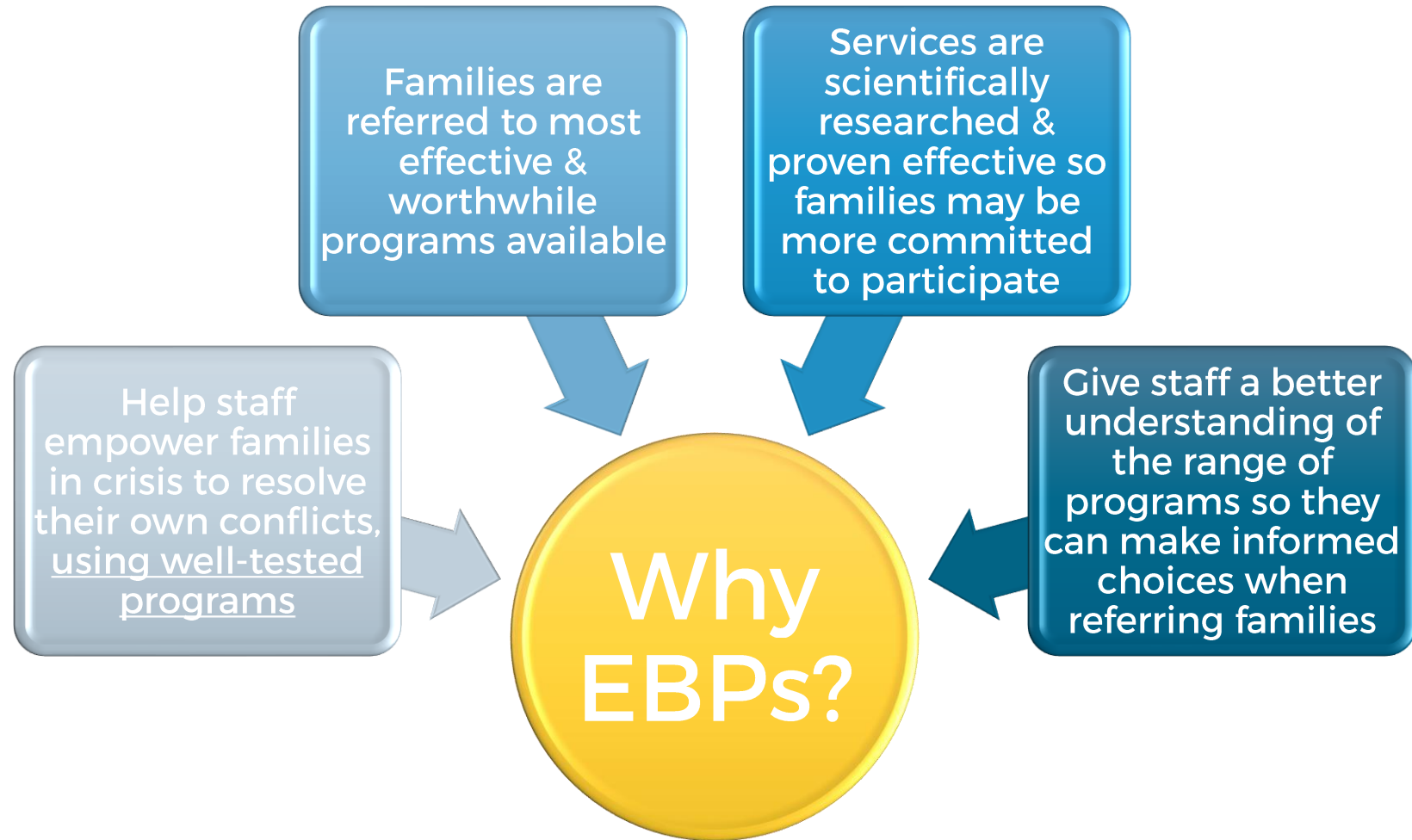
NEBRASKA

Good Life. Great Mission.

DEPT. OF HEALTH AND HUMAN SERVICES

Helping People Live Better Lives.

Evidenced Based Prevention Programs



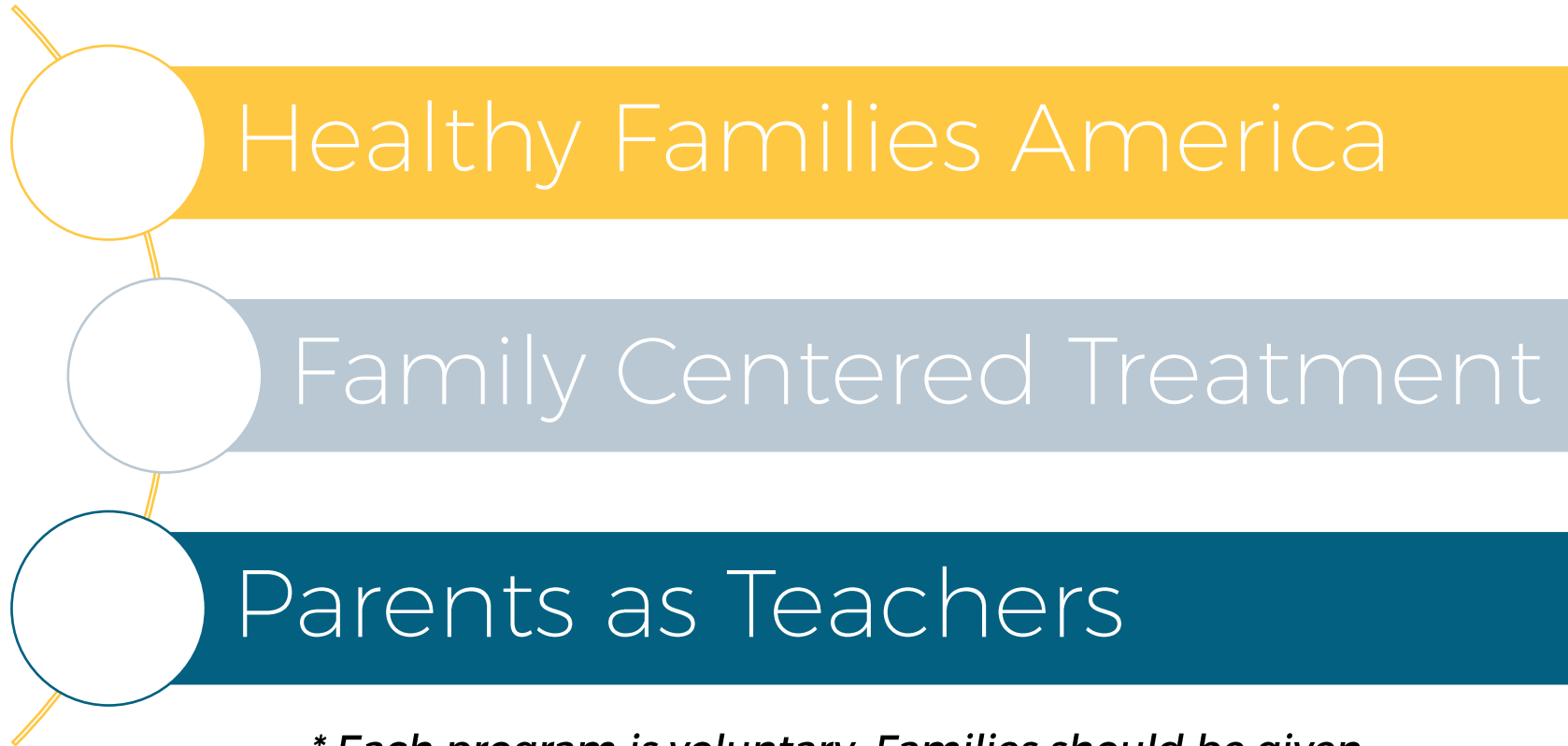
NEBRASKA

Good Life. Great Mission.

DEPT. OF HEALTH AND HUMAN SERVICES

Helping People Live Better Lives.

Current EBPs in Nebraska



** Each program is voluntary. Families should be given information on each program, to decide if and/or which program they would like to participate in.*

Helping People Live Better Lives.

Healthy Families America



- Evidenced based, trauma informed, home visiting program for expectant parents.
- Promotes child well being and prevents abuse and neglect.
- Improves birth outcomes.
- Promotes positive parenting practices.
- Cultivates and strengthens nurturing parent child relationships.
- Promotes healthy child development.
- Improves school readiness.

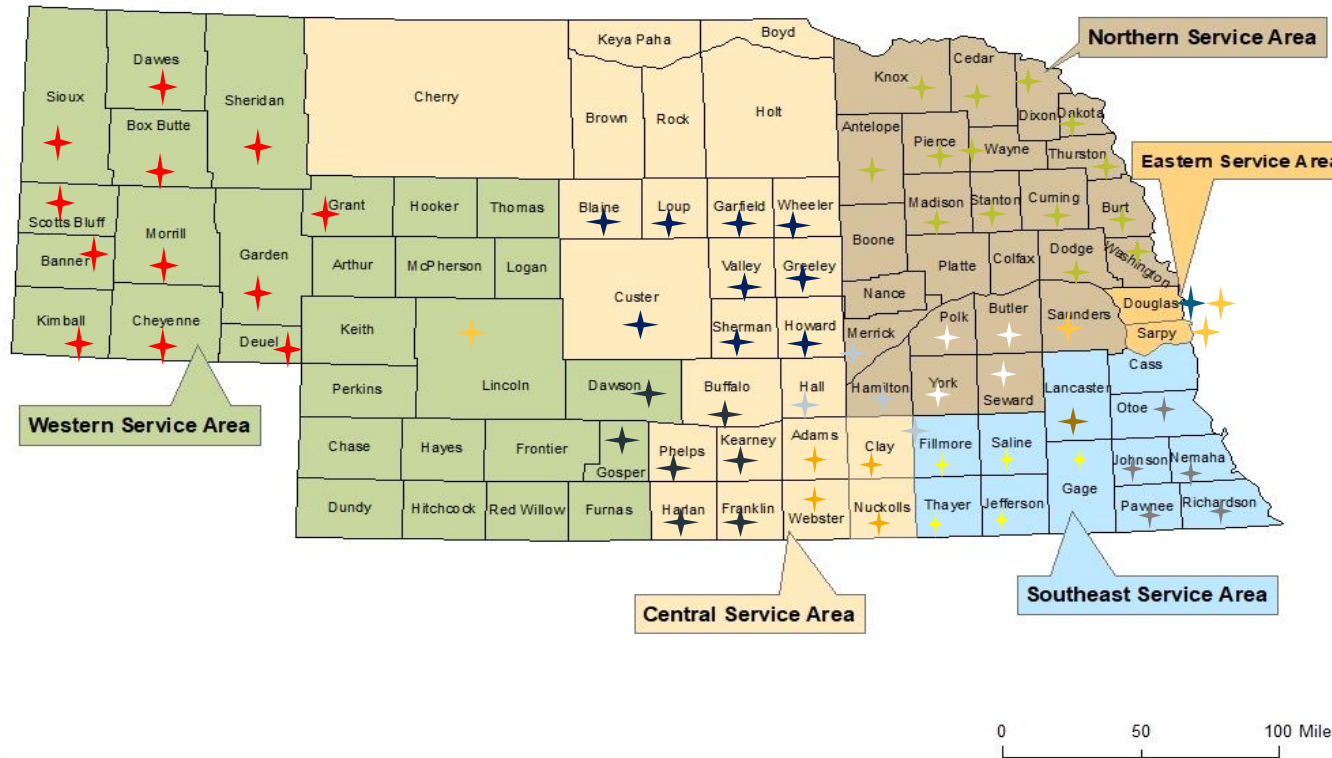
NEBRASKA

Good Life. Great Mission.

DEPT. OF HEALTH AND HUMAN SERVICES

Helping People Live Better Lives.

Division of Children and Family Service Areas



- ★ Panhandle Public Health District (PPHD)
- ★ Public Health Solutions (PHS)
- ★ Lincoln/Lancaster County Health Department (LLCHD)
- ★ Loup Basin Public Health Department (LLBPHD)
- ★ Nebraska Children's Home Society (NCHS)
- ★ Central District Health Department (CDHD)
- ★ Visiting Nurses Association (VNA)
- ★ South Heartland District Health Department (SHDHD)
- ★ Four Corners Health Department (FCHD)
- ★ Southeast District Health Department (SEDHD)
- ★ Northeast NE Comm. Action Partnership (NENCAP)
- ★ Two Rivers Public Health Department (TRPHD)

NEBRASKA

Good Life. Great Mission.

DEPT. OF HEALTH AND HUMAN SERVICES

Helping People Live Better Lives.

Parents as Teachers



- Evidenced based, trauma informed home visiting parent education model.
- Teaches new and expectant parents skills intended to promote positive child development.
- Helps to prevent child maltreatment.
- Provides early detection of developmental delays and health issues.
- Prevents child abuse and neglect.
- Improve maternal and child health.
- Families can be enrolled prenatal-Kindergarten-Parents must be 25 or younger for NCHS' Young Parent Support Program.

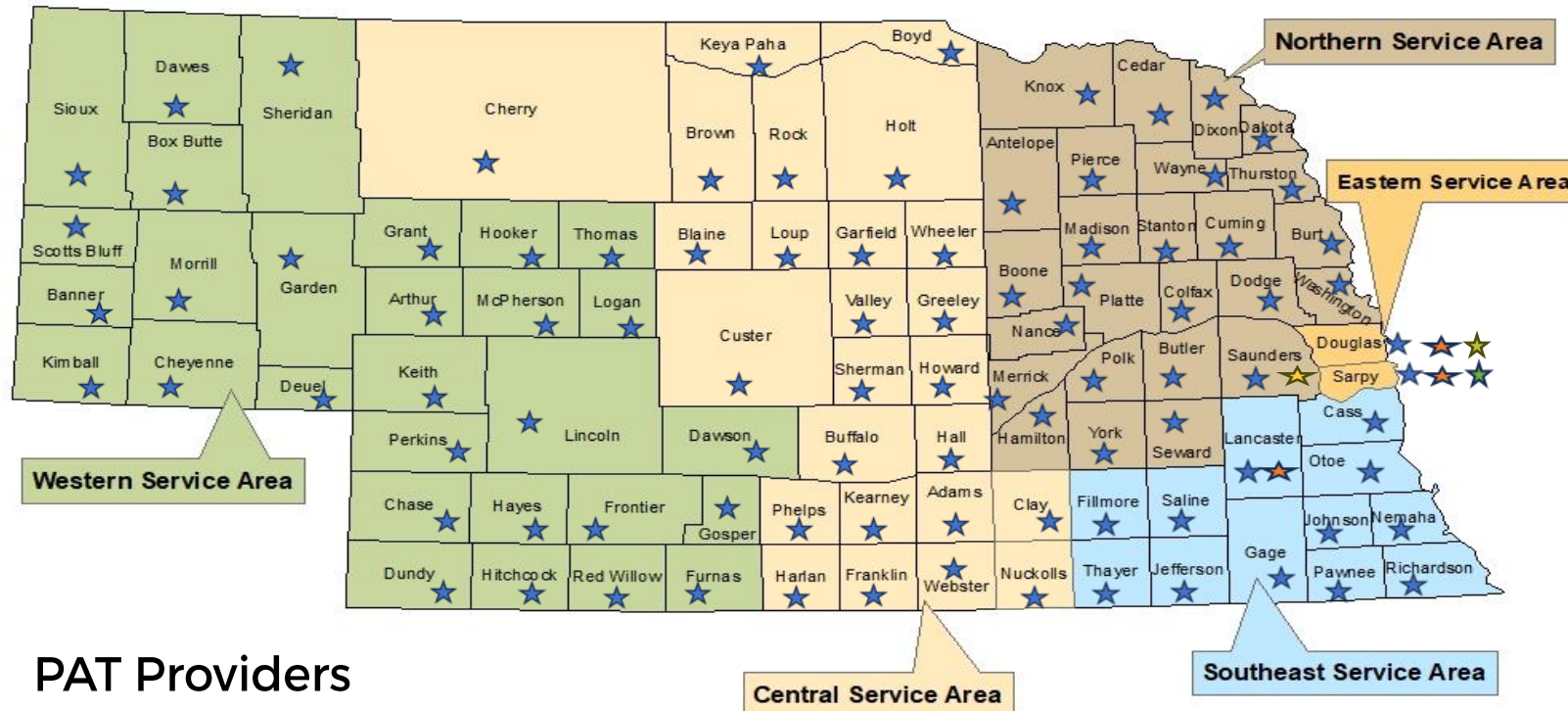
NEBRASKA
Good Life. Great Mission.
DEPT. OF HEALTH AND HUMAN SERVICES

Helping People Live Better Lives.

PARENTS AS TEACHERS AFFILIATED HOME VISITING PROGRAM MAP

Providers

Division of Children and Family Service Areas



PAT Providers

- ★ NCHS Pregnancy, Parenting, and Adoption Program
- ★ NCHS Young Parent Support Program
- ★ LFS Parents as Teachers Program

Pregnancy, Parenting, and Adoption Program Nebraska Children's Home Society

Serves all 93 counties in NE

Jamie Gardner

1028 North Webb Road, Suite C Grand Island, NE 68803

(308)381-0568

jgardner@nchs.org

Young Parent Support Program Nebraska Children's Home Society

Douglas/Sarpy Counties:

(Parent must be 25 and younger)

Dianna Jones

4939 South 118th Street

Omaha, NE

(402) 451-0787

djones@nchs.org

PAT Parents as Teachers Program Lutheran Family Services

Douglas, Sarpy, Lancaster and Saunders Counties:

Susan Pawloski

7929 West Center Road

Omaha, NE

(402)342-7038

susan.pawloski@onelfs.org

NEBRASKA

Good Life. Great Mission.

DEPT. OF HEALTH AND HUMAN SERVICES

Helping People Live Better Lives.

Family Centered Treatment

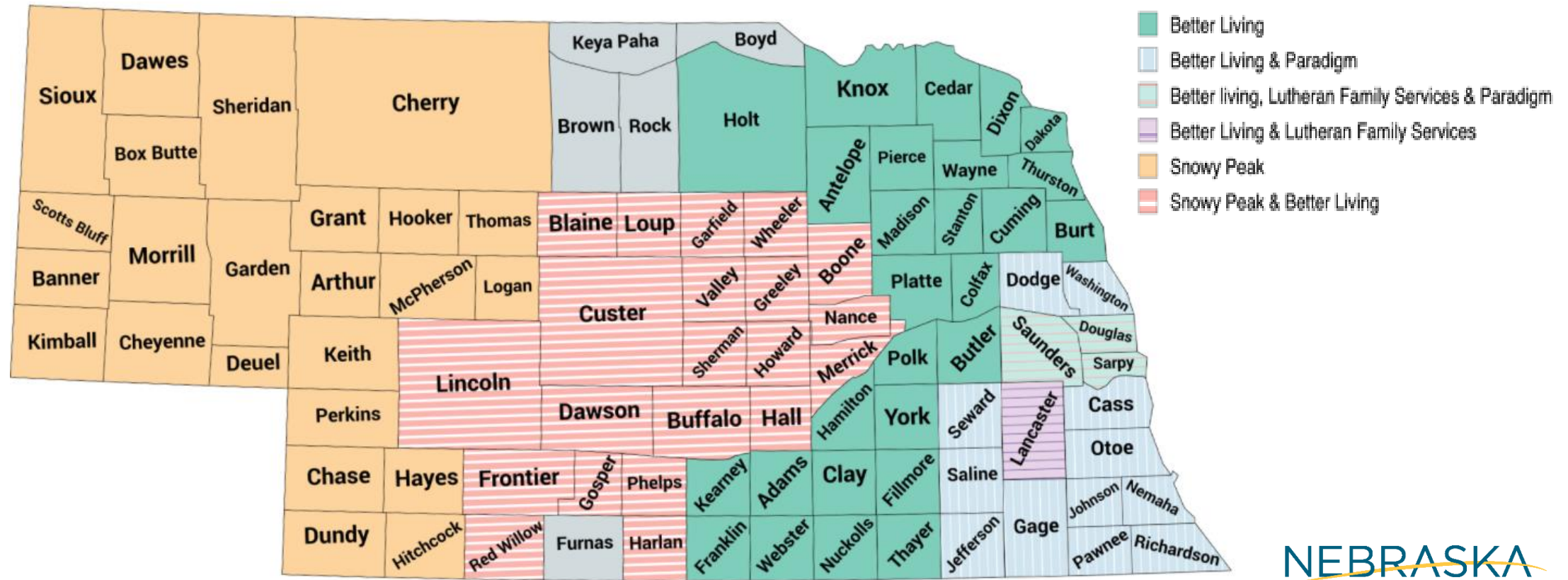


- Evidenced based, trauma informed family preservation model that provides home based treatment.
- Enables family stability through preservation or development of family placement.
- Reduces harmful behaviors that affect family functioning.
- Works with the whole family, in the family home, when it's convenient for the family.
- Clinician meets with family during most troublesome and difficult times.
- Provides 24/7 on call crisis support for the family with their known clinical staff.
- Provides the family opportunities to practice functioning differently (not just talk therapy).

NEBRASKA
Good Life. Great Mission.
DEPT. OF HEALTH AND HUMAN SERVICES

Helping People Live Better Lives.

Family Centered Treatment Provider Map



05.08.2025 FCT Foundation

NEBRASKA

Good Life. Great Mission.

DEPT. OF HEALTH AND HUMAN SERVICES

Helping People Live Better Lives.

Clinical Child Welfare Evidence Based Programs in Nebraska

Child Parent
Psychotherapy

Parent Child
Interaction
Therapy

Trauma Focused
Cognitive
Behavioral
Therapy

Multi-Systemic
Therapy

Eye Movement
Desensitization
and
Reprocessing

NEBRASKA

Good Life. Great Mission.

DEPT. OF HEALTH AND HUMAN SERVICES

Helping People Live Better Lives.

Tertiary Prevention

Decrease re-entry into the child welfare system

Bridge to Independence Program

Family Check Up

Prevention Track

NEBRASKA

Good Life. Great Mission.

DEPT. OF HEALTH AND HUMAN SERVICES

Helping People Live Better Lives.

Future of Child Welfare Prevention in Nebraska



Updated FFPSA Plan

Implementation of additional evidence based programs

Community Pathway

Warmline

NEBRASKA

Good Life. Great Mission.

DEPT. OF HEALTH AND HUMAN SERVICES

Helping People Live Better Lives.

New FFPSA Plan

Submitted new
Plan in 2025

Added 4 EBPs

Included
Nebraska's intent
to implement a
Community
Pathway

Included a
broader FFPSA
candidacy
definition

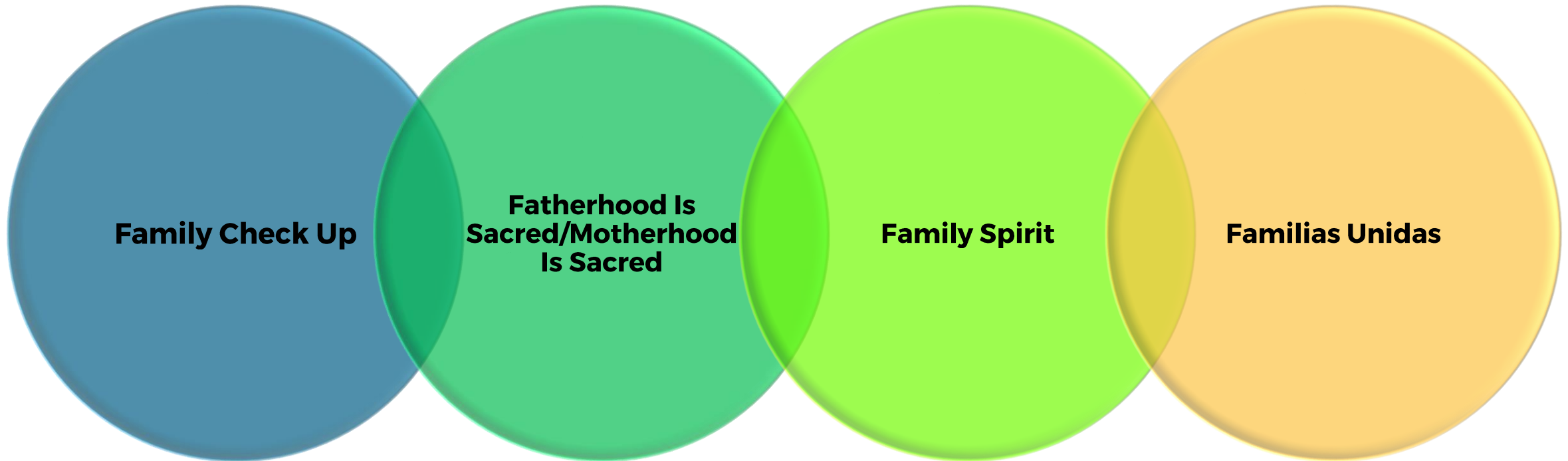
NEBRASKA

Good Life. Great Mission.

DEPT. OF HEALTH AND HUMAN SERVICES

Helping People Live Better Lives.

Additional Evidence Based Programs



NEBRASKA

Good Life. Great Mission.

DEPT. OF HEALTH AND HUMAN SERVICES

Helping People Live Better Lives.

Concept of Community Pathway

- Any avenue that families can use to access Title IV-E funded prevention programs or services through Family First outside of the traditional child welfare service delivery and case management context-Chapin Hall
- Integrate CPS prevention work into community pathway infrastructures
- This pathway would be operationalized as an avenue for families to access FFPSA programs without being involved with CPS
 - Who provides service delivery & case management in a community pathway? Options include but are not limited to:

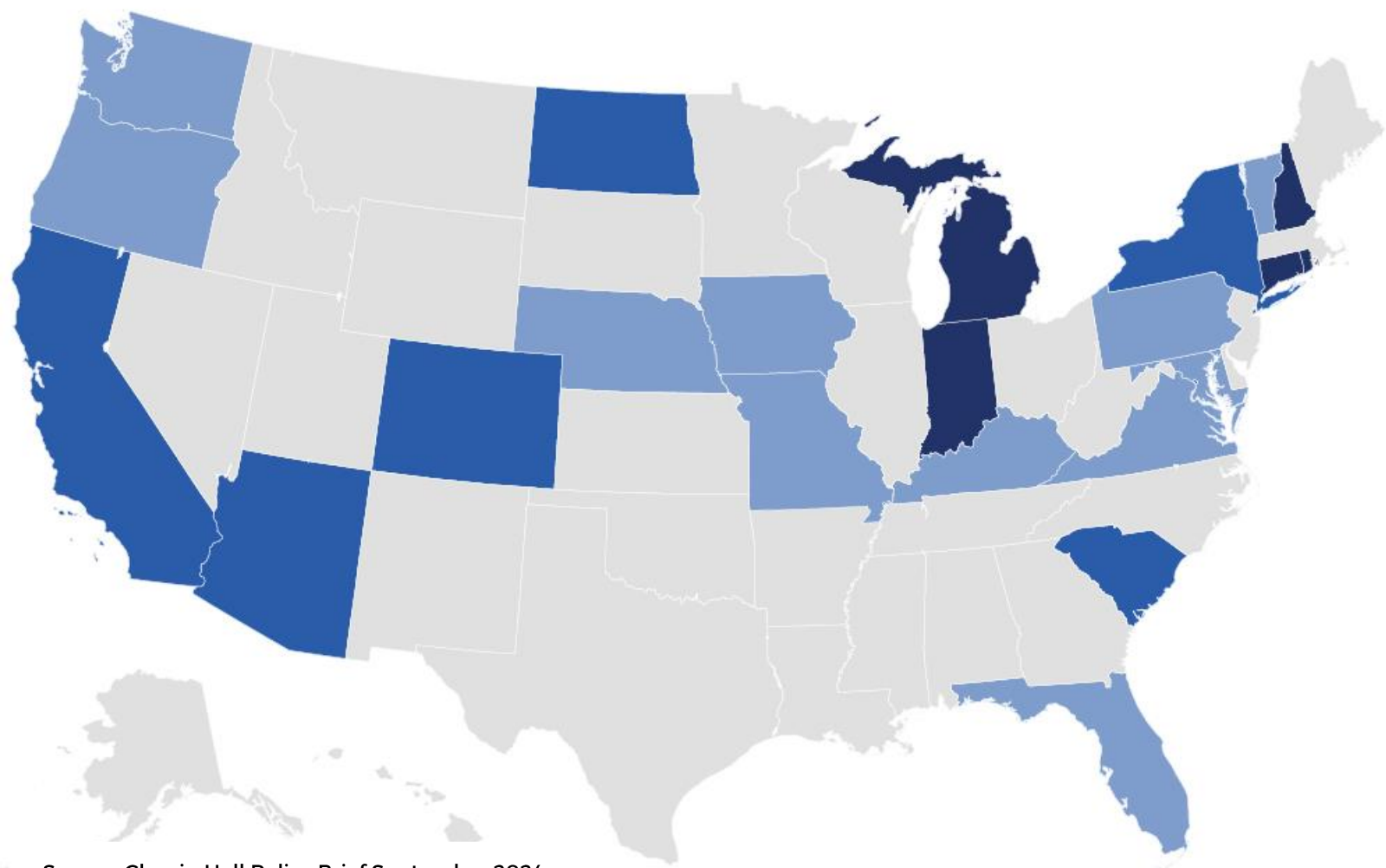
Contracted community-based agencies (e.g. family resource centers)

Specific evidence-based prevention service providers (e.g. home visitors)

Non-child welfare public agency partners
(e.g. Departments of homelessness, behavioral health, public assistance, etc.)

Source: Chapin Hall

Community Pathways Across the Nation



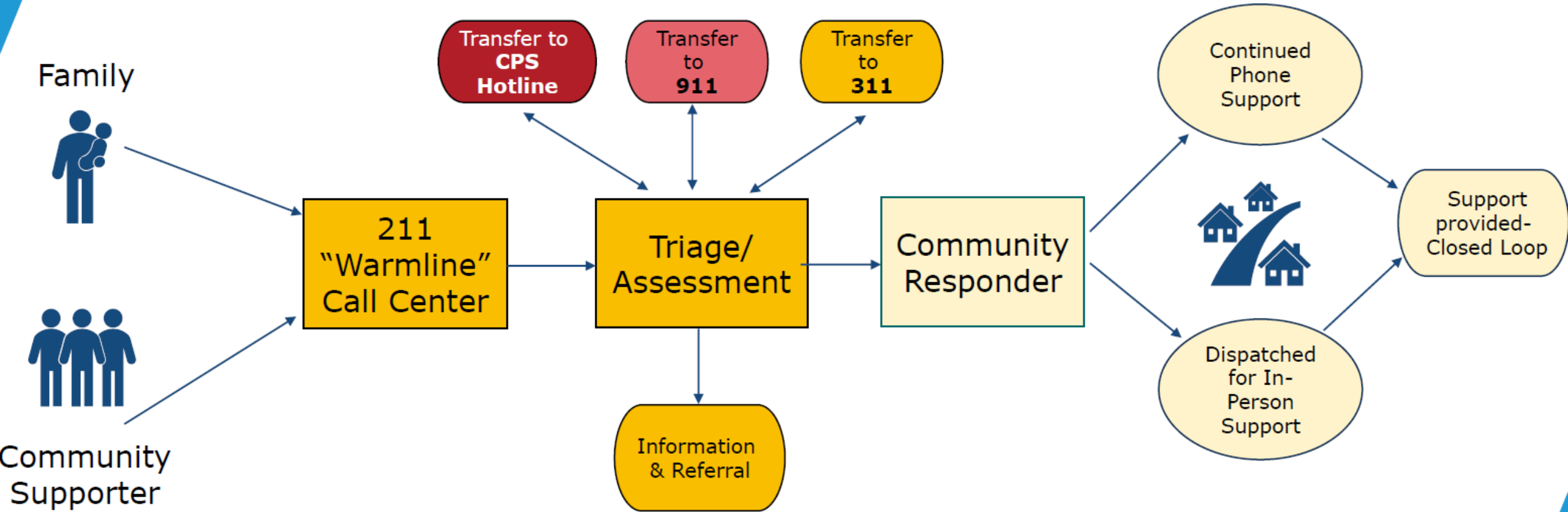
Conceptualizing	Ready	Implementing
Maryland	Arizona	Connecticut
Missouri	California	Indiana
Nebraska	New York	New Hampshire
Oregon	North Dakota	Rhode Island
Pennsylvania	South Carolina	Washington, DC
Vermont	Colorado	Michigan
Washington	Total: 6	Total: 6
Florida		
Virginia		
Iowa		
Kentucky		
Port Gamble Tribe		
Total: 12		

Source: Chapin Hall Policy Brief September 2024

Powered by Bing
© GeoNames, Microsoft, TomTom

Helping People Live Better Lives.

Warmline & Community Response Model Process



Community Pathway Warmline in New York

- Developed a Warmline in 2022
- Have answered over 7,000 calls
- Provide support to a family to mitigate the need for child welfare intervention
- Does not provide any direct services or case management to callers
- Focus on revised mandated reporter training to clearly understand when to support vs when to report

Source: Office of Children and Family Services, New York State



**Office of Children
and Family Services**

Helping People Live Better Lives.

NEBRASKA

Good Life. Great Mission.

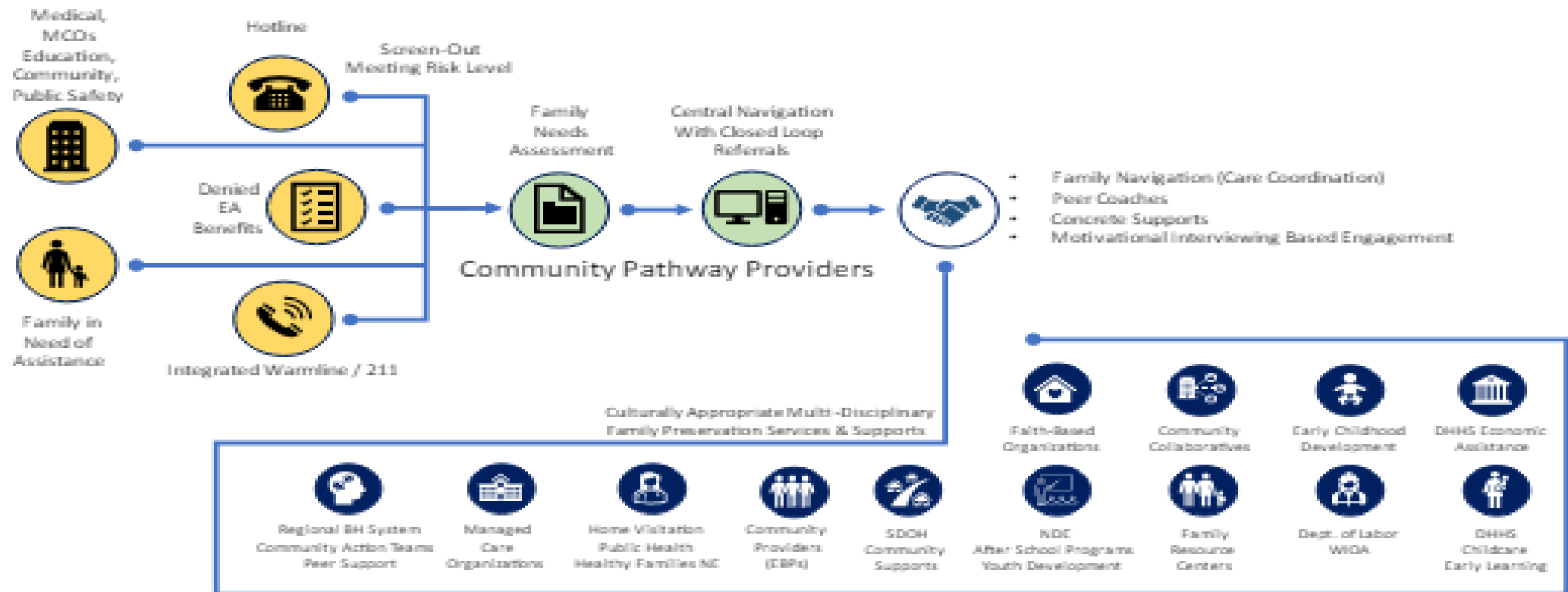
DEPT. OF HEALTH AND HUMAN SERVICES

Community Pathway Warmline in Nebraska

- Strategy to support a community pathway, by proactively mitigating circumstances within a family that may have resulted in unintended outcomes and divert a possible entry point with the child welfare system.
- Single access point resources
- Families can call themselves to ask for assistance
- Any other caller type can call for resources or guidance to support a family
- Intended for calls that do not need the level of intervention through the CPS Hotline/CFS
- Screened-out CFS hotline calls could be referred to the Warmline after screening
- Initial needs screening
- Navigation to connect to the right resource in a closed-loop referral system

Warmline visual from Reimaging Wellbeing report

Community Response Pathway: *LB 1173 Future State Prevention Model*



Helping People Live Better Lives.

Next Steps

- Obtain approval from ACF on new Prevention Plan
- Request for Proposal to establish and maintain a third-party infrastructure of a Warmline.
- Requires statute changes to be fully implemented
- FFPSA Advisory Committee engagement: will be tasked with partnering with the contracted Warmline vendor to engage providers who will be receiving the referrals.
- Meet with providers to discuss bringing up/building capacity of EBPs

For more information:

http://dhhs.ne.gov/children_family_services/FamiliesFirst/Pages/Home.aspx

Camas Holder

Deputy Director of Community and Clinical Partnerships

camas.holder@nebraska.gov

Jamie Kramer

DHHS Administrator I

jamie.kramer@nebraska.gov



@NEDHHS



NebraskaDHHS



@NEDHHS

dhhs.ne.gov

NEBRASKA

Good Life. Great Mission.

DEPT. OF HEALTH AND HUMAN SERVICES

Helping People Live Better Lives.